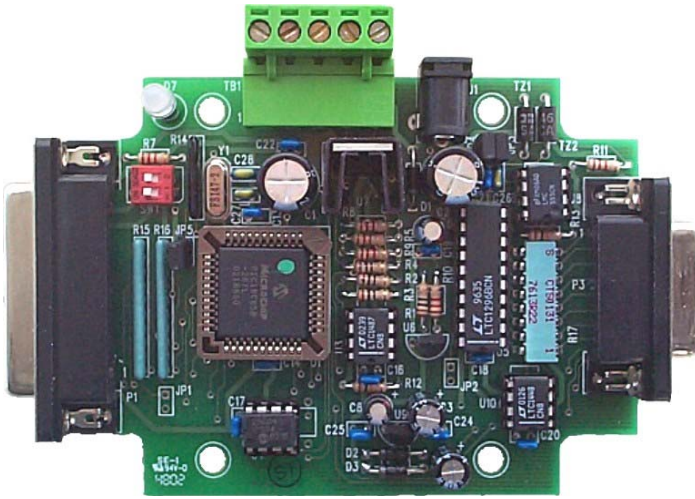


# SuperLogics



## ADC-1R2-485 Series I/O Modules

Digital I/O  
Analog I/O

---

## **Table of Contents**

### **Introduction**

|                   |   |
|-------------------|---|
| Features.....     | 3 |
| Quick Start ..... | 4 |

### **Communications**

|                                 |   |
|---------------------------------|---|
| RS-232 Packet Information ..... | 6 |
|---------------------------------|---|

### **Commands and Responses**

|                                     |   |
|-------------------------------------|---|
| Command and Response Table .....    | 7 |
| Command and Response Examples ..... | 8 |
| Analog Control Nibble.....          | 9 |

### **Module Configuration**

|                  |    |
|------------------|----|
| EEPROM Map ..... | 10 |
|------------------|----|

### **Sampling rates**

|                          |    |
|--------------------------|----|
| Analog and digital ..... | 11 |
|--------------------------|----|

### **Mode of Operation**

|                  |    |
|------------------|----|
| Polled Mode..... | 11 |
|------------------|----|

### **Digital I/O Technical Information**

|                                              |    |
|----------------------------------------------|----|
| Digital I/O Characteristics .....            | 12 |
| Digital I/O Port Configuration Example ..... | 12 |
| PWM Characteristics .....                    | 13 |
| PWM Commands.....                            | 13 |

### **Analog I/O Technical Information**

|                                  |    |
|----------------------------------|----|
| Analog I/O Characteristics ..... | 14 |
| Voltage References .....         | 14 |
| Analog Voltage Sampling .....    | 14 |
| Analog Conversion .....          | 15 |
| Analog Offset Calibration .....  | 15 |
| Analog Current Sampling .....    | 16 |
| Analog Current Conversion .....  | 16 |

### **Digital & Analog I/O Port Specifications**

|                               |    |
|-------------------------------|----|
| Digital & Analog pinouts..... | 17 |
|-------------------------------|----|

### **Module Specifications**

|                                               |    |
|-----------------------------------------------|----|
| PCB Illustrations .....                       | 18 |
| Dip switch and jumper settings .....          | 18 |
| ADC-1R2-485 Series Module Specifications..... | 19 |
| 485 cable specifications.....                 | 19 |

### **Peripherals**

|                                |    |
|--------------------------------|----|
| Analog expander.....           | 20 |
| Analog signal conditioner..... | 20 |
| Analog terminal strip .....    | 20 |

## Introduction

Welcome to the SuperLogics **ADC-1R2-485 Series** of I/O modules. These modules using RS-485 communications are available in different configurations dependent on your needs and applications. In addition they are offered in an enclosure, or open allowing you the end user complete flexibility when determining the parameters for your project.

Configurations for ADC-1R2-485 models with enclosure are

ADC-1R2-485

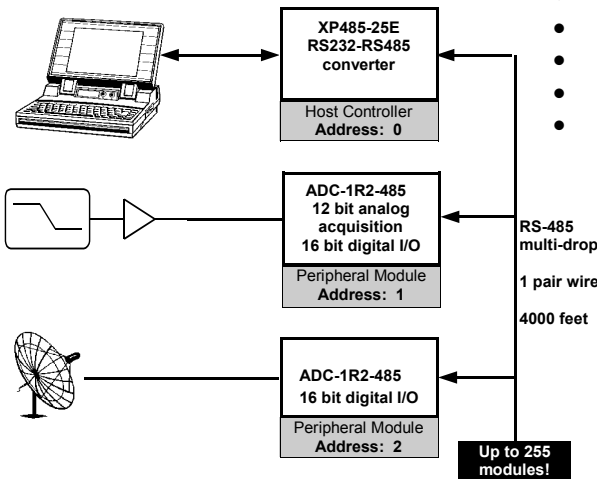
16 digital I/O and 8 channels A to D conversion

## I/O Module features:

|              |                                                                                                                                   |
|--------------|-----------------------------------------------------------------------------------------------------------------------------------|
| MPU:         | Microchip PIC16C65B                                                                                                               |
| EEPROM:      | Microchip 25C040                                                                                                                  |
| MPU Clock:   | 14.7456 Mhz                                                                                                                       |
| Interface:   | RS-485 (multidrop up to 255 nodes)                                                                                                |
| Baud:        | 9600, 19200, 57600, 115200 (DIP switch selectable)                                                                                |
| LED:         | Bicolor diagnostic LED                                                                                                            |
| Watchdog:    | MPU has built-in watchdog timer                                                                                                   |
| POR:         | MPU contains timed Power On Reset circuitry                                                                                       |
| Brownout:    | MPU brownout detection circuitry built-in                                                                                         |
| Temperature: | 0° to 70°C (32° to 158°F) <i>Commercial Temperature Range</i><br>-40° to +85°C (40° to 185°F) <i>Industrial Temperature Range</i> |
| PCB:         | FR4                                                                                                                               |
| Power:       | 7.5Vdc to 15.0Vdc, approximately 50 ma.                                                                                           |

## ADC-1R2-485 Series Features

- 16 Digital I/O lines
- 8 12 bit Analog Inputs
- 2 12 bit Analog Outputs
- PWM Output
- 32 bit Pulse Counter 1 Mhz



---

## Quick Start Instructions

### You need the following:

- EZTerminal program available **free** on our website <http://www.superlogics.com>
- An open COMPORT on your PC
- Power supply PS9J (9VDC 400 ma unregulated)
- A cable to connect your PC to your **ADC-1R2-485** I/O module

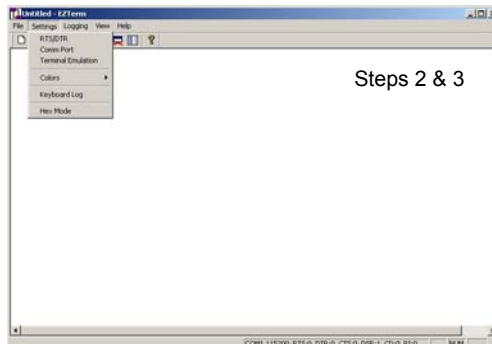
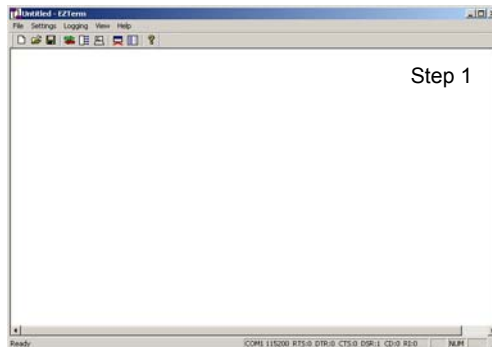
### Make these DIP switch settings for 115,200 baud

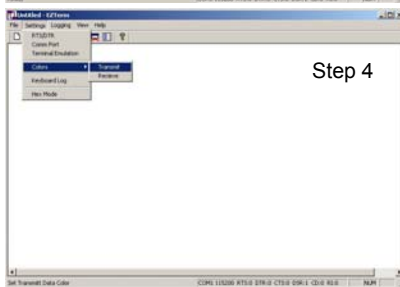
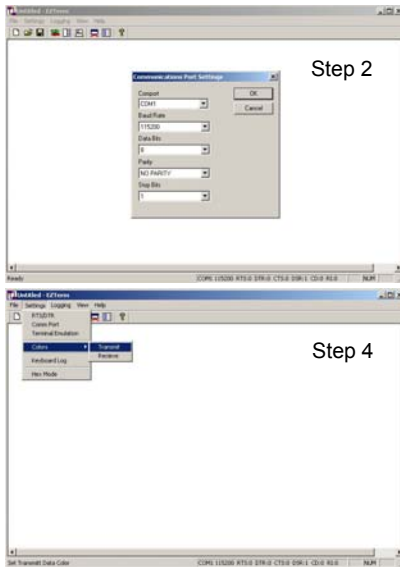
**SW1:** ON

**SW2:** ON (These are **factory default** settings, see page 22)

### Launch the EZTerminal program

1. Double click the icon in whatever area you have put the program.
2. Under "**Settings**" then choose Comport and select your RS-232 port, 115,200 Baud Rate, 8 Data Bits, NO PARITY, and 1 Stop Bits.
3. Under "**Settings**" now choose "**Terminal Settings**", and check the "**Append LF to incoming CR**" box, and "**Local echo typed characters**" check box.
4. You may change the color of the transmitted and received characters by going under "**Settings**" and selecting "**Colors**" then "**Transmit**" or "**Receive**" and pick the color of your choice.





**Your First Command**

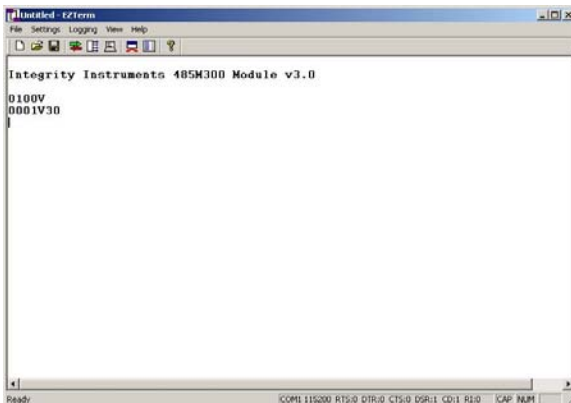
Now that you have a EZTerminal session running, your ready to power up the **ADC-1R2-485 Series I/O Module**. After powering up your **ADC-1R2-485 Series Module**, EZTerminal will receive a welcome message from the unit indicating you are ready to provide your first command.

**RS-485 Firmware Version Command:**

- Type **0100V** and the **Enter Key**
- You should see 0001V30 on the screen
- **NOTE:** Make sure to type **CAPITAL V**, not lowercase v!

After your first command, see **Commands and Responses** section for more commands.

Screenshots and setup instructions performed running EZTerminal on a PC installed with Microsoft® Windows® XP Operating System.



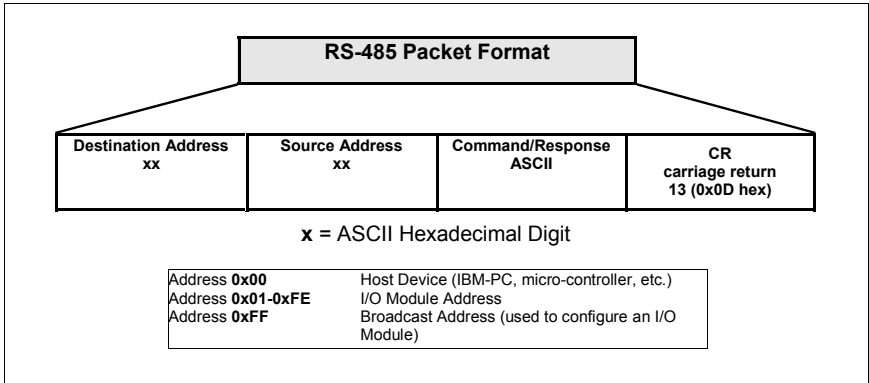
---

## Communications

The SuperLogics **ADC-1R2-485 Series** modules use RS-485 as the communications interface. The interface uses simple **ASCII** commands. A carriage return (**decimal code 13 or Hex code 0x0D**) marks the end of a data packet. Line feeds (**decimal code 10 or Hex code 0x0A**) are ignored.

### RS-485 Interface:

- RS-485 operates Half Duplex
- Each module (node) on the bus has a unique Address 1 to 254 (0x01-0xFE hex)
- We use the Linear Technologies® RS-485 bus drivers (LTC1487) allowing up to **256 nodes** on the RS-485 multi-drop bus
- Address 0 (0x00 hex) is reserved for the Host controller
- Address 255 (0xFF hex) is reserved for Broadcast messages. **Address 0xFF is accepted by all modules on the RS-485 bus.**



## Commands and Responses

The following table illustrates the SuperLogics I/O module commands and responses.

### NOTE

- All numeric data is represent as **ASCII Hexadecimal integers** (value **x/y** in the table)
- If a module receives an illegal or improperly formatted command, Error Response is sent.
- All ASCII characters are **CASE SENSITIVE** (use all capital letters!)

## Commands and Responses v3.0 Firmware

| Command Sent by Host | Response Sent by I/O Module | Description                                                                                             |
|----------------------|-----------------------------|---------------------------------------------------------------------------------------------------------|
| V                    | Vxy                         | Firmware version x.y                                                                                    |
| I                    | Ixyy                        | Input digital port status<br>xx = PORT1<br>yy = PORT2<br><b>Also returns current output port status</b> |
| Oxyy                 | O                           | Output digital port:<br>xx = PORT1<br>yy = PORT2                                                        |
| Txyy                 | T                           | Set digital direction:<br>xx = PORT1<br>yy = PORT2<br>bit set(1) = Input, bit clear(0) = Output         |
| G                    | Gxyy                        | Get current digital direction:<br>xx = PORT1<br>yy = PORT2<br>bit set(1) = Input, bit clear(0) = Output |
| N                    | Nxxxxxxxx                   | Get Pulse Counter<br>(xxxxxxxx 32 bit counter value)                                                    |
| M                    | M                           | Clear Pulse Counter                                                                                     |
| Qy                   | Qyxxx                       | Bipolar sample analog (y control nibble, xxx analog value)                                              |
| Uy                   | Uyxxx                       | Unipolar sample analog (y control nibble, xxx analog value)                                             |
| Lyxxx                | L                           | D/A output y (channel setting 0 or 1), xxx 12 bit D/A output)                                           |
| K                    | Kxx                         | Get receive error count (xx current count)                                                              |
| J                    | J                           | Clear receive error count                                                                               |
| Pxyyy                | P                           | PWM (xx = PWM frequency, yyy = PWM duty)                                                                |
| Wyxxx                | W                           | Write EEPROM (yy address, xx value)                                                                     |
| Ryy                  | Rxx                         | Read EEPROM (yy address in command, xx value in response)                                               |
| Z                    | Z                           | Reset CPU                                                                                               |
|                      |                             |                                                                                                         |
|                      | <b>X</b>                    | <b>Command error response</b>                                                                           |

## RS-485 Interface Example Commands

The following table illustrates actual command and response data for an RS-485 interface.

### NOTE

- All numeric data is represent as ASCII Hexadecimal integers
- Example **Host Address** = 0x00 and **Module Address** = 0x13
- The symbol ↵ equates to a carriage return (decimal 13, hex 0x0D)

| Command Sent by Host | Response Sent by I/O Module | Description                                                                                                                       |
|----------------------|-----------------------------|-----------------------------------------------------------------------------------------------------------------------------------|
| 1300V↵               | 0013V30↵                    | Module Firmware version 3.0                                                                                                       |
| 1300I↵               | 0013IFF00↵                  | Input digital port [PORT1 bits0-7 ON]<br>[PORT2 bits0-7 OFF]<br><b>Note:</b> this command also returns the current digital output |
| 1300O007F↵           | 0013O↵                      | Output digital port [PORT1 bits 0-7 OFF]<br>[PORT2 bit 7 OFF, bits 0-6 ON]                                                        |
| 1300TFF80↵           | 0013T↵                      | Set digital direction [PORT1 bits 0-7 INPUT]<br>[PORT2 bit 7 INPUT, bits 0-6 OUTPUT]                                              |
| 1300G↵               | 0013GFF80↵                  | Get current digital direction [PORT1 bits 0-7 INPUT]<br>[PORT2 bit 7 INPUT, bits 0-6 OUTPUT]                                      |
| 1300N↵               | 0013N0000000F↵              | Get pulse counter: Current count = 15                                                                                             |
| 1300M↵               | 0013M↵                      | Clear pulse counter: Current count = 0                                                                                            |
| <b>1300Q1</b> ↵      | <b>0013Q100F</b> ↵          | Bipolar analog control nibble = 0x1<br>Analog reading = 0x00F                                                                     |
| <b>1300U8</b> ↵      | <b>0013U840F</b> ↵          | Unipolar analog control nibble = 0x8<br>Analog reading = 0x40F                                                                    |
| 1300L1800↵           | 0013L↵                      | D to A Output Channel 1 = 2.5 Volts                                                                                               |
| 1300K↵               | 0013K00↵                    | Current receive errors = 0                                                                                                        |
| 1300J↵               | 0013J↵                      | Clear receive error count: Current receive                                                                                        |
| 1300P4801F↵          | 0013P↵                      | PWM freq = 50499 Hz, PWM duty = 10.6%                                                                                             |
| 1300W0410↵           | 0013W↵                      | Write EEPROM Address 0x04 with value 0x10                                                                                         |
| 1300R04↵             | 0013R10↵                    | Read EEPROM Adress 0x04 (value is 0x10)                                                                                           |
| 1300Z↵               | 0013Z↵                      | Reset CPU (forces a watchdog timeout after                                                                                        |

### **Analog Control Nibble and Example**

The **ADC-1R2-485 Series** modules utilizes the Linear Technologies LTC1296 analog to digital conversion chip. In the process of performing a data sample, the user sends a control nibble to the ADC-1R2-485 module. The module in turn performs a data conversion using the control nibble and transmits a response data sample back. The following table lists each of the 16 possible analog configurations.

### **NOTE**

- All numeric data is represent as ASCII Hexadecimal integers
- The symbol  $\downarrow$  equates to a carriage return (decimal 13, hex 0x0D)
- See **Technical Info** section for sample to volts conversion

| <b>Control Nibble<br/>Sent by Host</b> | <b>Analog Sample</b>    |
|----------------------------------------|-------------------------|
| 0                                      | Differential: CH0+ CH1- |
| 1                                      | Differential: CH2+ CH3- |
| 2                                      | Differential: CH4+ CH5- |
| 3                                      | Differential: CH6+ CH7- |
| 4                                      | Differential: CH0- CH1+ |
| 5                                      | Differential: CH2- CH3+ |
| 6                                      | Differential: CH4- CH5+ |
| 7                                      | Differential: CH6- CH7+ |
| 8                                      | Single Point: CH0       |
| 9                                      | Single Point: CH2       |
| A                                      | Single Point: CH4       |
| B                                      | Single Point: CH6       |
| C                                      | Single Point: CH1       |
| D                                      | Single Point: CH3       |
| E                                      | Single Point: CH5       |
| F                                      | Single Point: CH7       |

| <b>Command<br/>Sent by Host</b> | <b>Response<br/>Sent by I/O Module</b> | <b>Description</b>                                                                           |
|---------------------------------|----------------------------------------|----------------------------------------------------------------------------------------------|
| 1300Q0 $\downarrow$             | Q000F $\downarrow$                     | Bipolar sample differential CH0+ CH1-<br>(Control = 0)<br>Analog sample = 0x00F (decimal 15) |
| 1300UA $\downarrow$             | UA123 $\downarrow$                     | Unipolar sample CH4 (Control = A )<br>Analog sample = 0x123 (decimal 291)                    |

## EEPROM Map:

| Address                   | Description                                                                                                                                                                       |
|---------------------------|-----------------------------------------------------------------------------------------------------------------------------------------------------------------------------------|
| 0x00                      | Module Address (RS-485 address)<br><b>[factory default = 0x01]</b>                                                                                                                |
| 0x01                      | N/A - Reserved                                                                                                                                                                    |
| 0x02                      | Data Direction Port 1<br>Bit set (1) = Input Bit clear (0) = Output<br><b>[factory default = 0xFF]</b>                                                                            |
| 0x03                      | Data Direction Port 2<br>Bit set (1) = Input Bit clear (0) = Output<br><b>[factory default = 0xFF]</b>                                                                            |
| 0x06                      | Port 1 Power on Default output<br><b>[factory default = 0x00]</b>                                                                                                                 |
| 0x07                      | Port 2 Power on Default output<br><b>[factory default = 0x00]</b>                                                                                                                 |
| 0x08<br><i>See Note 1</i> | Expander board flag (Opto-22 modules attached)<br>0x00 = No expander board attached<br>0xFF = Expander board attached (invert digital signals)<br><b>[factory default = 0x00]</b> |
| 0x09/0x0A                 | D/A Channel 0 Power on Default output<br>12 bits - upper nibble in 0x09, lower byte in 0x0A<br><b>[factory default = 0x000]</b>                                                   |
| 0x0B/0x0C                 | D/A/ Channel 1 Power on Default output<br>12 bits - upper nibble in 0x0B, lower byte in 0x0C<br><b>[factory default = 0x000]</b>                                                  |
| 0x0D<br><i>See Note 2</i> | A/D Channels sample clock rate<br>0x00 = Normal A/D Channels sample clock rate<br>0xFF = Slowed A/D Channels sample clock rate<br><b>[factory default = 0x00]</b>                 |
| 0x04, 0x05,<br>0x0E, 0x0F | N/A - Reserved                                                                                                                                                                    |
| 0x10....0xFF              | Available to User                                                                                                                                                                 |

### **WARNING!**

The I/O Module CPU must be reset before new EEPROM settings take effect.

### **NOTE**

1. This flag is used when an expander board is attached. It allows for polarity interface to the industry standard I/O modules used with the expander board based on open collector logic that these modules use.
2. This is used to slow the A/D Channel sample clock rate. This may help when the A/D channels have a high impedance input attached.

---

## Analog & Digital I/O Sampling Rates

| Analog I/O  |                  |                     |
|-------------|------------------|---------------------|
| Baud Rate   | Delayed Response | No Delayed Response |
| 115,200     | 141              | 486                 |
| 57,600      | 123              | 257                 |
| 19,200      | 62               | 89                  |
| 9600        | 37               | 45                  |
| Digital I/O |                  |                     |
| Baud Rate   | Delayed Response | No Delayed Response |
| 115,200     | 164              | 523                 |
| 57,600      | 123              | 273                 |
| 19,200      | 66               | 94                  |
| 9600        | 39               | 47                  |

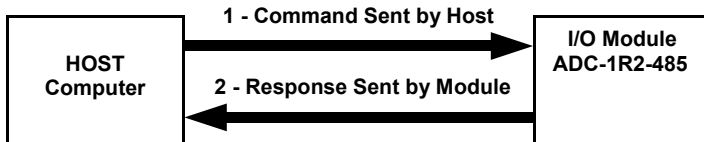
*Sampling rates are in samples per second for a single analog channel or 8 bit digital I/O port tested on Windows 2000 850 Mhz P3 with A/D clock running at full speed. Samples per channel = Sample rate ÷ number of channels being sampled.*

### Modes of Operation:

The **SuperLogics ADC-1R2-485 Series** I/O modules operates in the Polled Mode.

### Polled Mode

The Polled Mode is the most common usage of the **ADC-1R2-485 Series** I/O modules. In this mode the Host computer sends a command to the I/O Modules which in turn sends an associated response back to the Host computer.



### Digital I/O Characteristics

The following chart lists the Digital I/O characteristics and values.

| Characteristic             | Value                                                                                                              |
|----------------------------|--------------------------------------------------------------------------------------------------------------------|
| Digital I/O Current        | I/O line source & sink 25 ma<br>Total current PORT1 200 ma<br>Total current PORT2 200 ma                           |
| Digital I/O Voltage Levels | Input Off (0) = 0V - 0.8V<br>Input On (1) = 2.0V - 5.0V<br>Output Off (0) = 0.6V max.<br>Output On (1) = 4.3V min. |
| Pulse Counter Input        | 1 Mhz max. input rate<br>32 bit counter capture<br><b>Counter increments on high-low transition</b>                |

### Digital Port Configuration Example

Any Digital I/O configuration changes made to the I/O Module using the 'T' command are stored in EEPROM locations 0x02 and 0x03.

EEPROM Location 0x02      Port 1 I/O Configuration  
EEPROM Location 0x03      Port 2 I/O Configuration

When using either the 'T' command or directly writing to EEPROM using the 'W' command, a binary 1 at a bit location puts the I/O line into Input mode, while a binary 0 at a bit location puts the I/O line into Output mode.

### NOTE

- All numeric data is represent as ASCII Hexadecimal integers
- The symbol ↵ equates to a carriage return (decimal 13, hex 0x0D)

| Host Command | Module Response | Action                                                                                                                 |
|--------------|-----------------|------------------------------------------------------------------------------------------------------------------------|
| T0000↵       | T↵              | All I/O lines are configured as Outputs                                                                                |
| TFFFF↵       | T↵              | All I/O lines are configured as Inputs                                                                                 |
| TFF00↵       | T↵              | Port 1 bits 0-7 Inputs<br>Port 2 bits 0-7 Outputs                                                                      |
| T00FF↵       | T↵              | Port 1 bits 0-7 Outputs<br>Port 2 bits 0-7 inputs                                                                      |
| T1234↵       | T↵              | Port 1 bits 4,1 Inputs<br>Port 1 bits 7,6,5,3,2,0 Outputs<br>Port 2 bits 4,5,2 Inputs<br>Port 2 bits 7,6,3,1,0 Outputs |

## Pulse Width Modulation (PWM) Characteristics

The **ADC-1R2-485 Series** modules have a configurable PWM output. There are two settings to configure for proper PWM operation: **PWM frequency** and **PWM duty cycle**.

### PWM — Command

Pxyyyy    xx = Pwm\_Divisor    yyy = Pwm\_Duty (10 bits max.)

Pwm\_Divisor = 0x00 ... 0xFF

Pwm\_Duty = 0x000 ... 0x3FF    **Pwm\_Duty = 0, PWM output is disabled (output 0)**

### PWM — Control Values (14.7456 Mhz clock)

PWM Period = (Pwm\_Divisor + 1) / 3686400

PWM Duty Period = (Pwm\_Duty) / 14745600

Duty\_Resolution =  $\log(14745600 / F_{\text{pwm}}) / \log(2)$

PWM Duty Cycle % = PWM Duty Period / PWM Period

if (PWM Duty Period > PWM Period) then PWM Duty Cycle = 100%

| Pwm_Divisor | PWM Freq   | Duty_Resolution     |
|-------------|------------|---------------------|
| 0xFF (255)  | 14400 Hz   | 10 bits* (see note) |
| 0xFE (254)  | 14456 Hz   | 10 bits             |
| 0x5B (91)   | 40069 Hz   | 8 bits              |
| 0x00 (0)    | 3686400 Hz | 2 bits              |

\* **Note:** Pwm\_Divisor 0xFF cannot achieve complete 100% duty cycle. Use Pwm\_Divisor 0xFE if 100% duty cycle is required.

### Example PWM Commands

- All numeric data is represent as ASCII Hexadecimal integers
- The symbol ↵ equates to a carriage return (decimal 13, hex 0x0D)

| Host Command | Module Response | Action                                                    |
|--------------|-----------------|-----------------------------------------------------------|
| P0000↵       | P↵              | <b>PWM off</b><br>Any duty cycle of 0 disables PWM output |
| P4801F↵      | P↵              | PWM frequency = 50499 Hz<br>PWM duty = 10.6%              |
| PFE3FF↵      | P↵              | PWM frequency = 14456 Hz<br>PWM duty = 100%               |
| PFE1FE↵      | P↵              | PWM frequency = 14456 Hz<br>PWM duty = 50%                |

## Analog I/O Characteristics:

| Characteristic    | Value                                    |
|-------------------|------------------------------------------|
| A/D Converter     | Linear Tech LTC1296BCN $\pm .5$ LSB      |
| Linearity Error   | LTC1296BCN $\pm 0.012\%$ ( $\pm .5$ LSB) |
| Gain Error        | $\pm 0.012\%$ ( $\pm .5$ LSB)            |
| Offset Error      | $\pm 0.17\%$                             |
| Temperature Drift | 100 ppm/ $^{\circ}$ C ( max. )           |
| Max Input Voltage | 5V                                       |
| D/A Converter     | Linear Tech LTC1448                      |
| Offset Error      | $\pm 10$ mv                              |

### LTC1296 Operation

The analog inputs of the LTC1296 look like a 100pf capacitor (**Cin**) in series with a 500  $\Omega$  resistor (**Ron**). **Cin** gets switched between (+) and (-) inputs once during each conversion cycle. Large external source resistors and capacitances will slow the settling of the inputs. It is important that the overall RC time constant is short enough to allow the analog inputs to settle completely within the allowed time.

The voltage on the inputs must settle completely within the sample period. Minimizing **Rsource** will improve the settling time. If large source resistance must be used, the sample time can be increased by using a slower CLK frequency.

### Sampling Analog Voltage Inputs

By far the most common configuration of the **ADC-1R2-485 Series** I/O modules is to sample voltage values. Analog voltage levels are converted to integer digital values using the Linear Technologies LTC1296 A/D (Analog/Digital) chip. The input voltage range is determined by the reference voltage.

There are two analog sample types:

- 1) **Unipolar**
- 2) **Bipolar**

Both A/D sampling types result in a 12 bit binary integer value.

Vref = 5.000 standard

### Unipolar Analog Sampling Resolution

Unipolar analog sampling span is from ground (GND) to voltage reference (Vref). **Only positive voltages are sampled in unipolar mode.** The unipolar sample is represented as an unsigned integer as follows:

Unipolar voltages: 0V ... +Vref

The benefit of using Unipolar samples over Bipolar samples is that a 12 bit binary value is spread out over less total voltage span (Vref total.)

- 1 LSB unipolar = Vref/4096
- 1 LSB unipolar = 5.000/4096
- 1 LSB unipolar = 0.0012207 volt

---

### **Bipolar Analog Sampling Resolution**

Bipolar analog sampling span is from -Vref to +Vref. Both negative and positive voltages are sampled and represented as a signed binary integer (2's complement) as follows:

Bipolar voltages: -Vref ... 0 ... +Vref

The benefit of using Bipolar sampling over Unipolar is obvious, negative voltages! The downfall of using Bipolar sampling is that a 12 bit binary value is spread out over a larger total voltage span ( $2 \times V_{ref}$  total.)

1 LSB bipolar =  $V_{ref}/2048$

1 LSB bipolar =  $5.000/2048$

1 LSB bipolar = 0.0024414 volt

### **Voltage Conversion**

The Analog conversion value obtained from the **ADC-1R2-485 Series** module is represented as an integer value (either signed for Bipolar samples or unsigned for Unipolar sample) and is normally converted to a Real or Floating Point number for ultimate usage.

$V_{ref} = 5.000$  standard

### **Unipolar Voltage Conversion Formula**

Volts [unipolar] =  $ADC\_Sample * (5.000/4096)$

Volts [unipolar] =  $ADC\_Sample * 0.0012207$

### **Bipolar Voltage Conversion Formula**

The following assumes that  $ADC\_Sample$  is an unsigned integer value.

```
if (ADC_Sample >= 2048)
    Volts [bipolar] = (ADC_Sample-4096) * (5.000/2048)
```

```
if (ADC_Sample <= 2047)
    Volts [bipolar] = ADC_Sample * (5.000/2048)
```

```
if (ADC_Sample >= 2048)
    Volts [bipolar] = (ADC_Sample-4096) * 0.0024414
```

```
if (ADC_Sample <= 2047)
    Volts [bipolar] = ADC_Sample * 0.0024414
```

---

### Sampling Current (4-20 ma) Inputs

Many devices output a current value instead of a voltage value. The secret to obtaining current readings is a 250 ohm resistor. Placing a 250 ohm resistor to ground on a 4-20 ma. current input will create a voltage potential of 1V to 5V.

If we remember Ohm's law:  $E = I * R$

$R = 250 \text{ ohms}$

$I = .004 \text{ to } .020 \text{ amps (4-20 ma.)}$

$E = 1.0V \text{ to } 5.0V$

### Obtaining current readings is a three step process:

1. Perform analog Unipolar sample
2. Convert unipolar sample to volts
3. Convert voltage to amps

The following formula will convert the raw analog sample reading to a current value.

$$\text{Current} = (\text{ADC\_Sample} * (5.000/4096)) / 250$$

### Obtaining accurate Analog samples

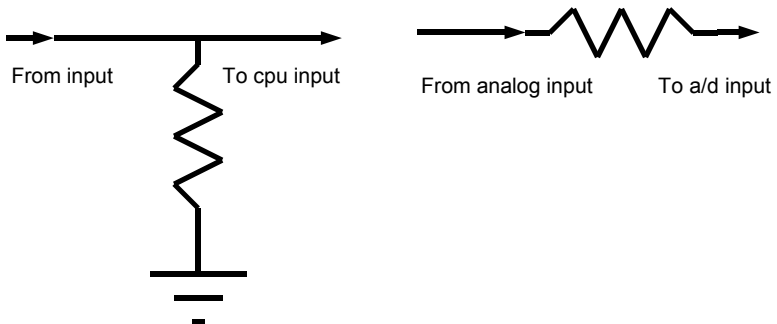
Please keep the following points in mind when attempting to obtain accurate samples.

- Avoid high impedance analog signal sources!
- Watch out for UPS systems! They create loads of EMI/EMF noise.
- Keep the analog signal source as close to the ADC-x module as possible.
- Keep transformers far away from the **ADC-1R2-485 Series** module.
- Use good wiring practices, especially in regards to ground connections.
- RS-232 interface can generate approx. 2 mv noise.

### Resistors for Analog and Digital I/O

The digital I/O points have a 100K  $\Omega$  resistor to ground to prevent floating inputs.

The analog inputs have a 560  $\Omega$  resistor in series to afford some protection to the A to D converter.



**Digital & Analog I/O Port Pin outs  
And Hex Conversion Chart**

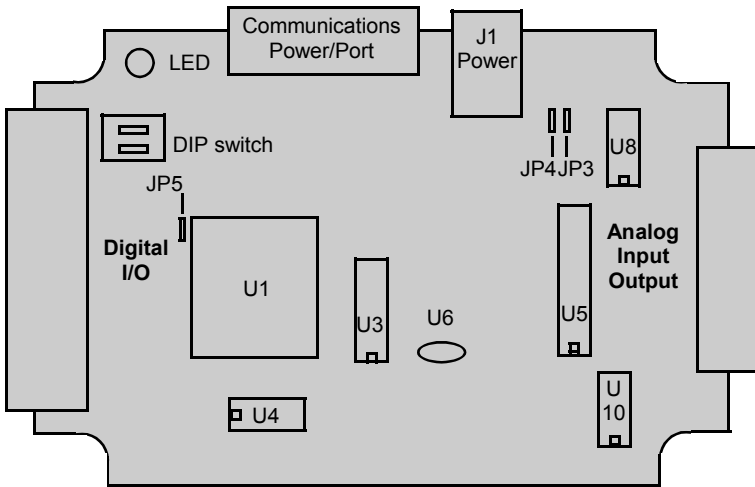
| EXAMPLE HEX CONVERSION |   |   |   |   |   |   |   |   |   |   |   |   |   |   |   |   |
|------------------------|---|---|---|---|---|---|---|---|---|---|---|---|---|---|---|---|
| X                      |   |   |   | X |   |   |   | Y |   |   |   | Y |   |   |   |   |
| BITS                   | 1 | 1 | 0 | 0 | 1 | 0 | 0 | 0 | 1 | 0 | 1 | 1 | 0 | 1 | 1 | 1 |
| HEX                    | C |   |   |   | 8 |   |   |   | B |   |   |   | 7 |   |   |   |

| Analog I/O |                     |
|------------|---------------------|
| DB15 Pins  | Description         |
| 1          | ANALOG IN CHANNEL 7 |
| 2          | ANALOG IN CHANNEL 6 |
| 3          | ANALOG IN CHANNEL 5 |
| 4          | ANALOG IN CHANNEL 4 |
| 5          | ANALOG IN CHANNEL 3 |
| 6          | ANALOG IN CHANNEL 2 |
| 7          | ANALOG IN CHANNEL 1 |
| 8          | ANALOG IN CHANNEL 0 |
| 9          | GND                 |
| 10         | + V UNREG           |
| 11         | + 5VDC REG          |
| 12         | - V UNREG           |
| 13         | V REFERENCE         |
| 14         | ANALOG OUT B        |
| 15         | ANALOG OUT A        |

| Digital I/O |                     |
|-------------|---------------------|
| DB25 Pins   | Description         |
| 1           | Port 2 Bit 0        |
| 2           | Port 2 Bit 1        |
| 3           | Port 2 Bit 2        |
| 4           | Port 2 Bit 3        |
| 5           | Port 2 Bit 4        |
| 6           | Port 2 Bit 5        |
| 7           | Port 2 Bit 6        |
| 8           | Port 2 Bit 7        |
| 9           | PWM output          |
| 10          | N/A                 |
| 11          | +V Unreg            |
| 12          | +5Vdc               |
| 13          | GND                 |
| 14          | Port 1 Bit 0        |
| 15          | Port 1 Bit 1        |
| 16          | Port 1 Bit 2        |
| 17          | Port 1 Bit 3        |
| 18          | Port 1 Bit 4        |
| 19          | Port 1 Bit 5        |
| 20          | Port 1 Bit 6        |
| 21          | Port 1 Bit 7        |
| 22          | Pulse Counter Input |
| 23          | -V Unreg            |
| 24          | +5Vdc               |
| 25          | GND                 |

| PORT 1    |           |   |   |   |           |           |   |   |   | PORT 2    |           |   |   |   |           |           |   |   |   |
|-----------|-----------|---|---|---|-----------|-----------|---|---|---|-----------|-----------|---|---|---|-----------|-----------|---|---|---|
| X         |           |   |   |   | X         |           |   |   |   | Y         |           |   |   |   | Y         |           |   |   |   |
| HEX VALUE | BIT VALUE |   |   |   | HEX VALUE | BIT VALUE |   |   |   | HEX VALUE | BIT VALUE |   |   |   | HEX VALUE | BIT VALUE |   |   |   |
|           | 7         | 6 | 5 | 4 |           | 3         | 2 | 1 | 0 |           | 7         | 6 | 5 | 4 |           | 3         | 2 | 1 | 0 |
| 0         | 0         | 0 | 0 | 0 | 0         | 0         | 0 | 0 | 0 | 0         | 0         | 0 | 0 | 0 | 0         | 0         | 0 | 0 | 0 |
| 1         | 0         | 0 | 0 | 1 | 1         | 0         | 0 | 0 | 1 | 1         | 0         | 0 | 0 | 1 | 1         | 0         | 0 | 0 | 1 |
| 2         | 0         | 0 | 1 | 0 | 2         | 0         | 0 | 1 | 0 | 2         | 0         | 0 | 1 | 0 | 2         | 0         | 0 | 1 | 0 |
| 3         | 0         | 0 | 1 | 1 | 3         | 0         | 0 | 1 | 1 | 3         | 0         | 0 | 1 | 1 | 3         | 0         | 0 | 1 | 1 |
| 4         | 0         | 1 | 0 | 0 | 4         | 0         | 1 | 0 | 0 | 4         | 0         | 1 | 0 | 0 | 4         | 0         | 1 | 0 | 0 |
| 5         | 0         | 1 | 0 | 1 | 5         | 0         | 1 | 0 | 1 | 5         | 0         | 1 | 0 | 1 | 5         | 0         | 1 | 0 | 1 |
| 6         | 0         | 1 | 1 | 0 | 6         | 0         | 1 | 1 | 0 | 6         | 0         | 1 | 1 | 0 | 6         | 0         | 1 | 1 | 0 |
| 7         | 0         | 1 | 1 | 1 | 7         | 0         | 1 | 1 | 1 | 7         | 0         | 1 | 1 | 1 | 7         | 0         | 1 | 1 | 1 |
| 8         | 1         | 0 | 0 | 0 | 8         | 1         | 0 | 0 | 0 | 8         | 1         | 0 | 0 | 0 | 8         | 1         | 0 | 0 | 0 |
| 9         | 1         | 0 | 0 | 1 | 9         | 1         | 0 | 0 | 1 | 9         | 1         | 0 | 0 | 1 | 9         | 1         | 0 | 0 | 1 |
| A         | 1         | 0 | 1 | 0 | A         | 1         | 0 | 1 | 0 | A         | 1         | 0 | 1 | 0 | A         | 1         | 0 | 1 | 0 |
| B         | 1         | 0 | 1 | 1 | B         | 1         | 0 | 1 | 1 | B         | 1         | 0 | 1 | 1 | B         | 1         | 0 | 1 | 1 |
| C         | 1         | 1 | 0 | 0 | C         | 1         | 1 | 0 | 0 | C         | 1         | 1 | 0 | 0 | C         | 1         | 1 | 0 | 0 |
| D         | 1         | 1 | 0 | 1 | D         | 1         | 1 | 0 | 1 | D         | 1         | 1 | 0 | 1 | D         | 1         | 1 | 0 | 1 |
| E         | 1         | 1 | 1 | 0 | E         | 1         | 1 | 1 | 0 | E         | 1         | 1 | 1 | 0 | E         | 1         | 1 | 1 | 0 |
| F         | 1         | 1 | 1 | 1 | F         | 1         | 1 | 1 | 1 | F         | 1         | 1 | 1 | 1 | F         | 1         | 1 | 1 | 1 |

**Model ADC-1R2-485 Series**



**ADC-1R2-485  
Series IC descriptions**

| IC  | Model <b>ADC-1R2-485</b> (Position and type is the same for all models) |
|-----|-------------------------------------------------------------------------|
| U1  | PIC16C65B MPU                                                           |
| U3  | LTC1487 RS-485 driver [8 pin DIP]                                       |
| U4  | 25C040 EEPROM [8 pin DIP]                                               |
| U5  | LTC1296 A to D [20 pin DIP]                                             |
| U6  | LM4040AIZ-5.0 0.1% Voltage Reference                                    |
| U8  | LMC555 Timer charge pump [8 pin DIP]                                    |
| U10 | LTC1448 D to A [8 pin DIP]                                              |

| <b>Baud Rate Switch and Jumper Settings</b> |            |                                         |                                          |
|---------------------------------------------|------------|-----------------------------------------|------------------------------------------|
| <b>SW1</b>                                  | <b>SW2</b> | <b>Baud Rate</b>                        | <b>Jumper Settings (factory default)</b> |
| OFF                                         | OFF        | 9600 baud                               | JP3/JP4 On 485 termination               |
| ON                                          | OFF        | 19200 baud                              |                                          |
| OFF                                         | ON         | 57600 baud                              | JP5 On Approx 2ms Delayed Response       |
| ON                                          | ON         | 115200 baud<br><b>(factory default)</b> |                                          |

## ADC-1R2-485 Series Module Specifications

### LED Operation

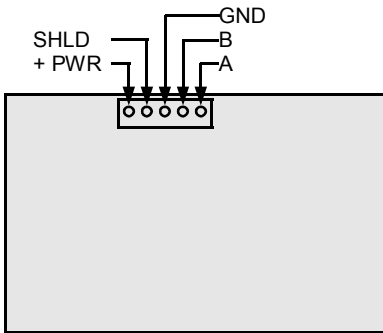
|                |                   |                                   |
|----------------|-------------------|-----------------------------------|
| Blinking Green | [1 per Second]    | Unit functioning correctly - idle |
| Blinking Green | [Rapid or Steady] | Unit receiving serial data        |
| Blinking Red   | [Rapid or Steady] | Unit transmitting serial data     |
| No LED         |                   | Unit is not functioning           |

### Power Supply

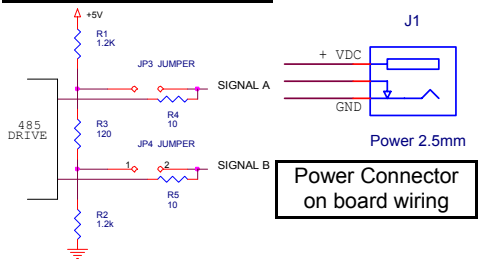
7.5-15.0Vdc approx. 50 ma. (we suggest our PS9J 9VDC 400 ma unregulated )

### GND and Shield

The GND and Shield terminals are connected on the **ADC-1R2-485** Series boards and are therefore electrically equivalent.



### ADC-1R2-485 active termination



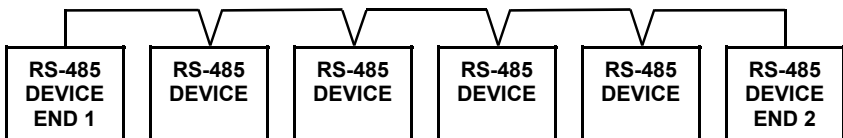
### RS-485 Cabling

The **ADC-1R2-485 Series** is designed to operate in a Multi-Drop RS-485 LAN configuration. In a half-duplex multi-drop environment all RS-485 nodes share the same data lines. A single pair of data lines act as both Transmit and Receive wires.

- \* Data lines (A/B) are the only wires required between RS-485 nodes
- \* All RS-485 nodes need not share the same V+ and GND

### Cabling Notes:

- 1) Gnd and Shld are connected internally within the **ADC-1R2-485 Series** modules
- 2) Cable termination is important for long distance and high-speed applications
- 3) Suggested cable: 24 awg stranded twisted pair with shield for cable runs in excess of 200 feet. See also Belden cable #9841 and #9463.
- 4) The normal connection method is the "Daisy Chain" type shown below. there are other kinds of connections, but this is considered as the standard.
- 5) The end units (END 1) and (END 2) should be terminated. All other units should not.



DAISY CHAIN

---

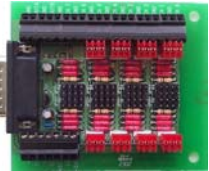
## Peripheral Add-On Modules

|                |                                             |
|----------------|---------------------------------------------|
| <b>AE-8CH</b>  | 8 channel analog connection board           |
| <b>ASC-2CH</b> | 2 channel signal conditioner                |
| <b>DB15TSM</b> | DB15 terminal strip (for analog connector)  |
| <b>DB25TSM</b> | DB25 terminal strip (for digital connector) |
| <b>EXP-x</b>   | Digital Interface board                     |

### Model: AE-8CH Analog Connection Board

Jumper configurable analog inputs:

- 1) 4-20 ma inputs
- 2) +/- 10 Vdc inputs
- 3) Solid state temperature probes



Handy terminal strip for all analog connections and voltages. MTA .100 jacks are also available for solid state temperature probes available from SuperLogics.

### Model: ASC-2CH Signal Conditioning Board

2 channels of precision instrumentation amplifiers.  
Gains of 1, 10, 100, 1000

Handy terminal strip for all analog connections and voltages.



### Models: DB15TSM and DB25TSM DB Terminal Strip

Terminal strip boards to conveniently connect to DB15 and DB25 connectors.

### Models: EXP-x Digital Interface Board

The **EXP-X** unit provides for digital interface and signal conditioning via industry standard opto-isolated I/O modules such as Opto-22. Each unit has 4 I/O points with large easy to use terminal screws. If more I/O points are required, simply plug in another unit up to 16 total I/O points. **Opto isolated modules:** 90V-140V AC input, 12V-140V AC output, 3.3V-32V DC input, 3V-60V DC output.

#### **WARRANTY**

**SuperLogics** warranties **all** products against defective workmanship and components for the life of the unit. SuperLogics agrees to repair or replace, at it's sole discretion, a defective product if returned to SuperLogics with proof of purchase. Products that have been mis-used, improperly applied, or subject to adverse operating conditions fall beyond the realm of defective workmanship and are not covered by this warranty.

Copyright © 2000-2003, SuperLogics, Inc.

All trademarks and/or registered trademarks are the property of their respective owners.

Revision: January 3, 2005 - v3.0