

## HMI Panel PC Panel PC

Configuration Number: BASE CONFIG  
SL-PPC-19A-J6412-H-2LAN



**LCD requires 12VDC power supply (included), Separate Computer input is wide voltage input**

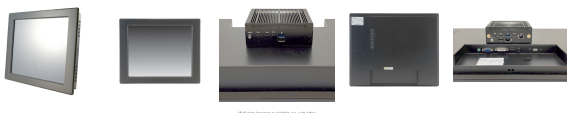
### Type:

- Fanless Panel PC
- **Screen:**
  - 19" 5-Wire Resistive, Native  
Resolution: 1280 x 1024, Front Panel  
Rating: IP65 / NEMA4
- **Mounting:** Bezel Mounting Hardware Included, Suitable for Mounting in Cut-Out

### Motherboard:

- Featuring Intel Celeron SoC and Intel Celeron J6412 Elkhart Lake Platform (Quad Core 2.0GHz/10W, Turbo 2.6GHz)
- **Long Production Cycle Motherboard (Through Q1 2036)**
- **LAN:** 2x Ports (2.5GbE (10/100/1000/2500))
- **WiFi:** Wireless AC
- **Video:** 1x DisplayPort + HDMI
- **Audio:** Realtek ALC888S HD Audio
- **Ports:**
  - 1x USB 2.0 Port( 1 Front )
  - 1x USB 3.2 Gen 1 Port( 1 Front )
  - 1x USB 3.2 Gen 2 Port ( 1 Rear )

See specifications for more ports
- **Operating Temperature:** -20°C to 60°C (-4°F to 140°F)



### Configuration summary:

- **Memory:** 8GB DDR4 3200MHz SODIMM RAM
- **Hard Drive:** 250GB NVMe SSD M.2

2.9GB/1.3GB - Samsung 980

- **Power Supply:** Adapter : AC\_90~240V / DC\_12V/40W
- **Operating System:** Not Included -
- **Warranty:** One-Year Depot Warranty

## Technical Specifications

### MotherBoard Specifications:

#### Motherboard Model

- Motherboard Type: NUC (101x101 mm)
- Long Production Cycle
- Long Life: YES
- EOL Date: Q1 2036
- Fanless

#### Supported CPU

- Number of Processors: 1
- Processor Type: Embedded CPUs (ultra-low power, soldered down)
- Embedded CPU: Intel Celeron J6412 Elkhart Lake Platform (Quad Core 2.0GHz/10W, Turbo 2.6GHz)

#### Chipset

- Chipset: Intel Celeron SoC

#### Memory

- Memory Type: SO DIMM DDR4 3200MHz
- Memory Type: Non-ECC
- DIMMS: 1
- Maximum Memory: 32GB

#### On Board Audio

- Audio Type: Realtek ALC888S HD Audio

#### On Board Video

- Video Chipset: Intel UHD Graphics for 10th Gen Intel Processors
- Video on IO: 1x DisplayPort + HDMI
- Display Port Out: 1
- HDMI Out: 2

#### LAN

- LAN Ports: 2
- LAN Type: 2.5GbE (10/100/1000/2500)
- LAN Chipset: Intel i225-V 2.5GbE Ethernet
- Second LAN Chipset: Intel i225-V 2.5GbE Ethernet
- Wireless LAN: Wireless AC

### Display Specifications

#### Display

- Screen Size (inches): 19
- Touch Type: 5-Wire Resistive
- Front Panel Rating: IP65 / NEMA4
- Aspect Ratio: 5 : 4
- Native Display Resolution: 1280 x 1024
- Brightness (nits): 350
- Screen Refresh Rate: 60Hz
- Display Area (H): 376.32mm
- Display Area (V): 301.07mm
- Aspect Ratio: 5 : 4
- DisplayColors: 16.7 M
- Contrast Ratio: 1000:1
- Backlight: LED
- Viewing Angle(U) : 80
- Viewing Angle(D) : 80
- Viewing Angle(L) : 80
- Viewing Angle(R) : 80

#### Connectivity

- DVI-I In: 1
- HDMI In: 1
- Display Port In: 1
- Touchscreen Interface USB Port (Front): 1

#### Mounting Options

- Mounting Options: VESA 75mm x 75mm, VESA 100mm x 100mm, Bezel Mounting Hardware Included, Other options sold separately
- Suggested Cut-Out Dimension (Width):
- Suggested Cut-Out Dimension (Height):

#### Physical

- Width:
- Height:
- Depth:
- Depth (Inches): Click Available Downloads Tab >

**M.2 Slot Specs**

- Total M.2 NVMe SSD Slots: 1
- M.2 Slot #1 Specs
- M.2 SATA SSD
- PCIe Signal
- 2260 - 22 mm x 60 mm.
- 2280 - 22 mm x 80 mm.

**Rear IO**

- USB 3.2 Gen 2 Type A Ports (on IO): 1

**Headers**

- USB 2.0 Ports (on Headers): 1
- USB 3.2 Gen 1 Ports (on Headers): 1
- FAN Connectors: 1

**Management Features**

- TPM Support: TPM via Intel Platform Trust Technology

**Environmental**

- Operating Temperature: -20°C to 60°C (-4°F to 140°F )
- High Humidity: 95%
- Low Humidity: 10%

**Operating System Support**

- Windows 10 Home (64 Bit)
- Windows 10 Pro (64-Bit)
- Windows 10 IoT 2021 LTSC Entry
- Windows 11 Home (64 Bit)
- Windows 11 Pro (64 Bit)
- SL-Windows 11PRO to 10PRO 64bit
- Windows 11 IoT 2024 LTSC Entry
- LINUX Ubuntu Desktop

**Compliance of Component**

- UL
- CE
- RoHS
- FCC
- CB
- CCC

**Warranty of Component**

- Motherboard Warranty: 1 Year

Chassis Specifications:

**General**

- Form Factor: NUC Box
- Front Facing I/O

Mechanical Drawings.

- Unboxed Weight: 14lbs
- Shipping Weight: 40lbs

**Environmental**

- MTBF: 30000hours
- Maximum Operating Temperature: 50C
- High Humidity: 90%
- Low Humidity: 8%
- Storage Temp (High): 60C
- Storage Temp (Low): -10C
- Storage Humidity (High): 90%
- Storage Humidity (Low): 8%

**Power**

- Power Supply: AC 100~240V/12V DC
- Power Consumption (on): 18Watts

**Compliance of Component**

- CE
- RoHS
- CCC

**Warranty**

- Warranty: 1 year

**Other**

- Features:

Industrial Display

- Screen Size: 19"
- Touch Type: 5-Wire Resistive
- Front Panel Rating: IP65 / NEMA4
- Native Display Resolution: 1280 x 1024
- Brightness (nits): 350
- Wide Voltage 9-36VDC

- Color: Black
- Material: Steel & Plastic
- Material Thickness: 1mm

**Front Ports**

- USB 2.0 Ports (Front): 1
- USB 3.2 Ports (Front): 1
- USB 3.2 Gen 2 Type-C (Front): 2
- Front Audio Ports: 1

**Physical**

- Depth: 109.20mm
- Depth (Inches): Click Available Downloads Tab > Mechanical Drawings.
- Width: 125mm
- Height: 44.50mm
- Shipping Box - Depth:
- Shipping Box - Width:
- Shipping Box - Height:
- Shipping Weight: 2lbs

**Power**

- Built-in Chassis Power Supply: Adapter :  
AC\_90~240V / DC\_12V/40W



www.superlogics.com  
Phone: 1-508-650-9500

sales@superlogics.com  
Fax: 1-508-650-9525